

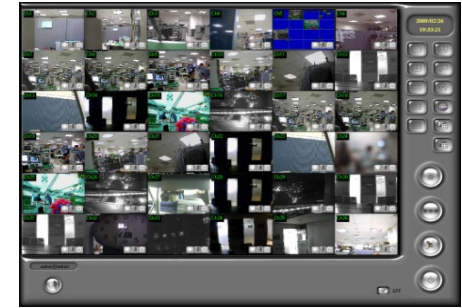
## ATIH Recording Software

### Main Features

4, 9, 16, 36 and 72 Channels  
 Up to 72 Channels with correct system resources  
 H.264, Mpeg-4, Mjpeg  
 Live window PTZ control  
 Live window DVR Control  
 Live/Playback digital zoom control  
 5 different record modes  
 Video search by time and smart search  
 Video export in AVI, Jpeg  
 Simultaneous Multi Channel Live and Playback  
 Record video and audio  
 Dual Monitor

### 4, 9, 16, 36, 72 Channel IP Software

E-map  
 Channel rotation  
 Audio broadcast  
 E-mail with picture file  
 Multiple e-mail group list  
 Pre/Post Alarm  
 Channel mask  
 Advance security setup  
 Sound warning file select  
 Attached channel function without network stress  
 Multiple remote site and user solution  
     Remote web browser  
     Remote program  
     Remote lite program  
     Remote 3GPP



### Specifications

#### Video Monitoring

Video Channel	4, 9, 16, 32, 72
Real-time monitoring mode	1,4,9,16,36,64
Channel Swap	Yes
Channel Rotation	Yes
Full Screen Monitoring	Yes
Compression Format Support	H.264, Mpeg-4, Mjpeg
Supported Device	Axis, Sony, ATIH Series
Hide Camera	Yes
DVR Control Panel	Yes
PTZ Control	Yes
Digital Zoom Control	Yes

#### Video Settings

Video Recording Mode	Schedule, Motion, Alarm Event, Man
Recorded Video Resolution	Megapixel, D1, CIF, QCIF
Video Quality Settings	Best, High, Standard, Medium, Low
Audio Record	Yes
Pre/Post Alarm Recording	Yes
Motion Detection	Yes
Overwrite data when HDD full	Yes
E-Mail Function	Yes
E-Mail with picture	Yes
Time and date stamp	yes

#### Video Playback

Multi-Channel Playback	Yes
Video Search	By Time
Smart Search	Yes
Video Export	Jpeg, AVI
Digital Zoom Control	Yes
Image Print	Yes
Frame Step Forward/Backward	Yes

#### Configuration Tools

Device Search	Yes
Channel Settings	Yes
Configure Import/Export	Yes
Event Log	Yes
Time Synchronization	Yes
Adjust to Default Resolution	Yes
Use Overlay	Yes
Windows Control	Yes

#### Security

Security Setting	By user or by group
------------------	---------------------