

MDCR-116F

DRIVE VIDEO/AUDIO, SHOCK, GPS RECORDING

- FEATURES -

- Client Program -

- MPEG4 Compression
- Recording Quality : Rough, Low, Standard, High, Fine
- Video 1CH
- Audio 1CH
- GPS (google map supporting)
- SD Card : 8GB and 16GB supporting
- Shock-sensor built-in (Default : 0.6G (0.1~1.5G))
- Alarm Function
- Pre/Post alarm : Pre-alarm (0~10sec)
Post-alarm (5~30sec)
- 1.3 MEGA Pixel CMOS
- Resolution : QVGA(320x240), VGA(640x480), MEGA(1280x960)
- Recording : Single mode : Not auto recording (Recording by shock sensor and emergency button)
Multi mode : Auto recording(Power On) and shock sensor and (overwrite function)



CAR DVR

- Accident Image Storage.

- When an accident occurs, this device automatically detects it through an impact sensor and records and saves images before and after accidents.

- Manual Image Storage

- Even without physical impact to a vehicle from an accident, the device records and saves images by a Driver's manually pushing the Emergency Button.

- Location Information Storage including the location, time, and speed of the time of accident.

Google map

Shock sensor Car Speed

- Vehicle Operation Information Storage

- The device records and stores certain vehicle motions including sudden acceleration, braking and sharp turns, as well as back and forth, right and left and up and down vibrations.

- Accident Data Replay

- In addition to accident data replay on Pcs, it also simultaneously plays the GPS Information and vehicle operation information. A software program is also provided that is simple and easy to use in setting various functions including user-oriented separate storage, printing, and screen shots.

CAR DVR

- Name of the parts -

- SPECIFICATIONS -

MODEL MDCR-116F

- 1.3 Mega Pixel CMOS
- 320x240(QVGA) upto 30fps, 640x480(VGA) upto 30fps, 1280x960(Mega)upto 5fps
- Internal Microphone
- Internal (SiRF III) GPS Module
- Internal 3D G-sensor (Collision, Q-break, Q-accel detection)
- SDHC 8GB (or 16GB)
- DC 12V ~ 24V (Cigar Jack included)

* Specification is subject to change without any notice.

Camera

Video Resolution

Audio Recording

GPS

G-Sensor

Data Storage

Power Supply

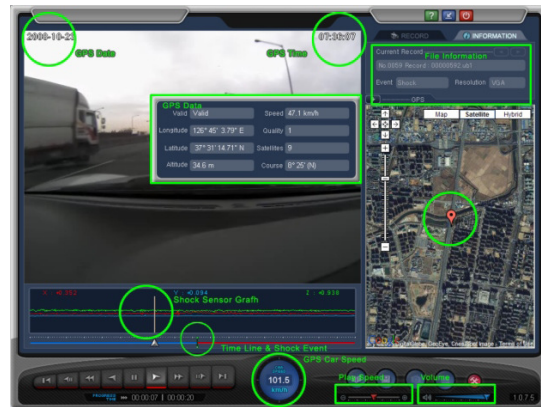
LENS

Camera Rack

SD Memory Card Slot

Recording LED(Red) GPS LED(Blue)

Emergency Button



- **Camera Lens**
 - Please clean the camera lens before use to avoid foreign matters blocking the lens.
 - **SD Memory Card Slot**
 - After inserting a SD memory card into the slot, connect the power cable.
 - **Power Terminal**
 - When power terminal is connected, the power is automatically turned on.
 - **Emergency Button**
 - Emergency Button is for manual image recording, and when the button is pressed, it records images.
 - **Recording LED (Red)**
 - The Record LED will turn on during recording and will blink if an event occurs or the emergency button is pressed.
 - **GPS LED (Blue)**
 - When GPS normally receives the satellite data, GPS LED is lighted on.
- Power Terminal