

HR Series 16 channel Embedded

Model #

HR-16

Features

- 480/120 fps display/record
- 16 Channel inputs
- 16 Sensor inputs
- 16 Relay output
- 1 TV-output
- Supports RS-232/422/485 PTZ Camera
- Email alert/text messaging
- Full remote network control software
- Remote control
- Mouse support



Specifications

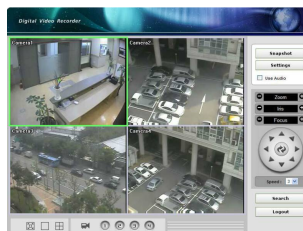
Channels	16 Looping Camera Inputs
Audio	4 Channel
Display fps	480fps
Resolution	320x240, 704x240, 704x480
Record fps	120 fps
Network	IE/software driven
Operating System	Linux
Warranty	1 year manufacturing
Power	120v AC UPS recommended
Audio Signal	75ohm
Input option	75ohm,network,bnc
HDD Capacity	250gig Standard with up to 1 terabyte HDD optional
Remote View	Windows XP, Vista Support, Windows 7
Case Options	Desk top/rack mount
Camera type	Analog
Storage	USB/DVD Burner
Monitor	VGA Monitor/Spot (configurable) Out
DDNS	Dynamic WAN IP support
License Plate	N/A
Central Monitoring	Link up DVR's and hundreds of Cameras for remote view
Motion Detection	Yes
Record Triggers	Motion/Alarm/Sensor/Continuous/Schedule
Options	(see below)
Data Capture	N/A
Remote Notification	Email
Display options	1,4,9,16

Notes:

The HR series of embedded DVR's has user friendly GUI that supports mouse integration as well as a host of other features not commonly found in a unit of this price point. Internet Explorer allows live and playback images. You will also find multiple levels of user authorization with only one Administrative log in for settings security while allowing low level access to live camera viewing. PTZ integration is user friendly with a mouse supported GUI that can be called up with a click of the mouse. Also expect great functionality with the network supported software which allows you to simply integrate multiple machines anywhere on the LAN or WAN.

Options:

Additional HDD



Adirondack Technology
20 Prospect St.
Ballston Spa, NY 12020

(800) 487-8815